

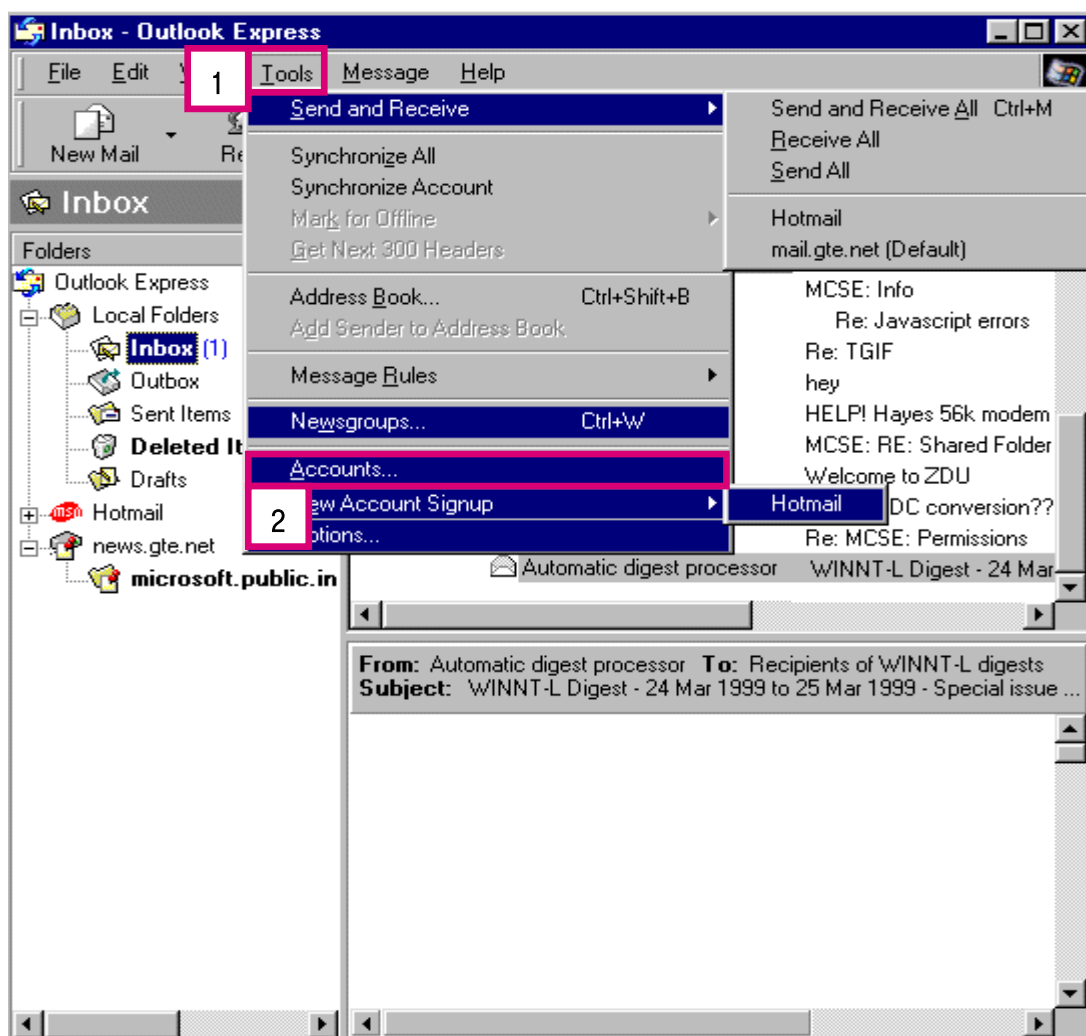


# Kreiranje mail računa u Microsoft Outlook Expressu

Kreiranje T-Com e-mail računa u Microsoft Outlook Express 5 i 6 (ENG)

## Pokretanje programa

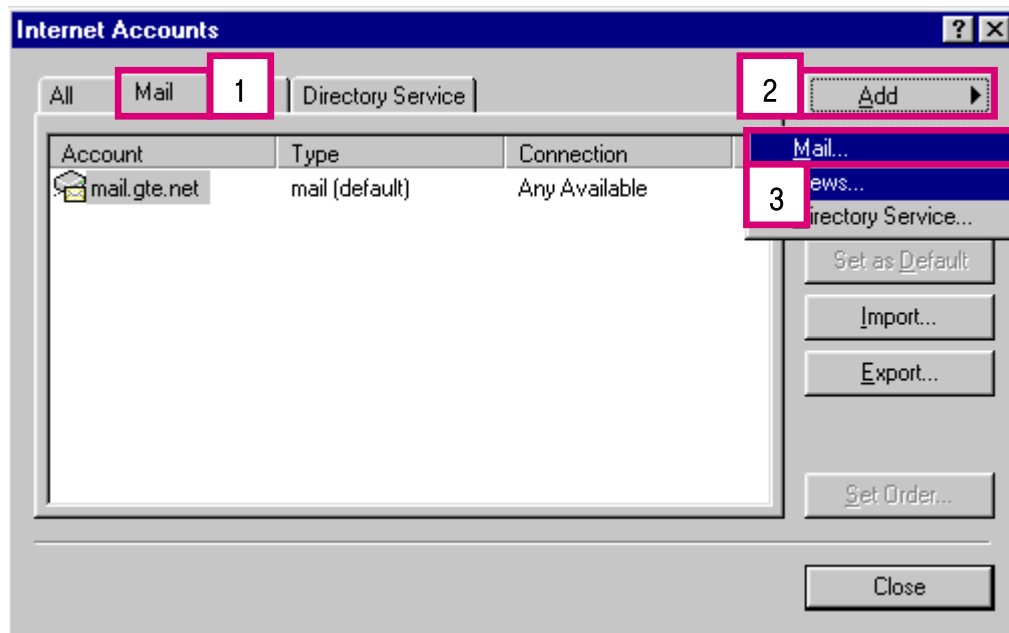
- Pokrenite Vaš Microsoft Outlook Express, u izborniku pronađite **Tools** (broj 1) zatim odaberite **Accounts** (broj 2).





## Podešavanje postavki

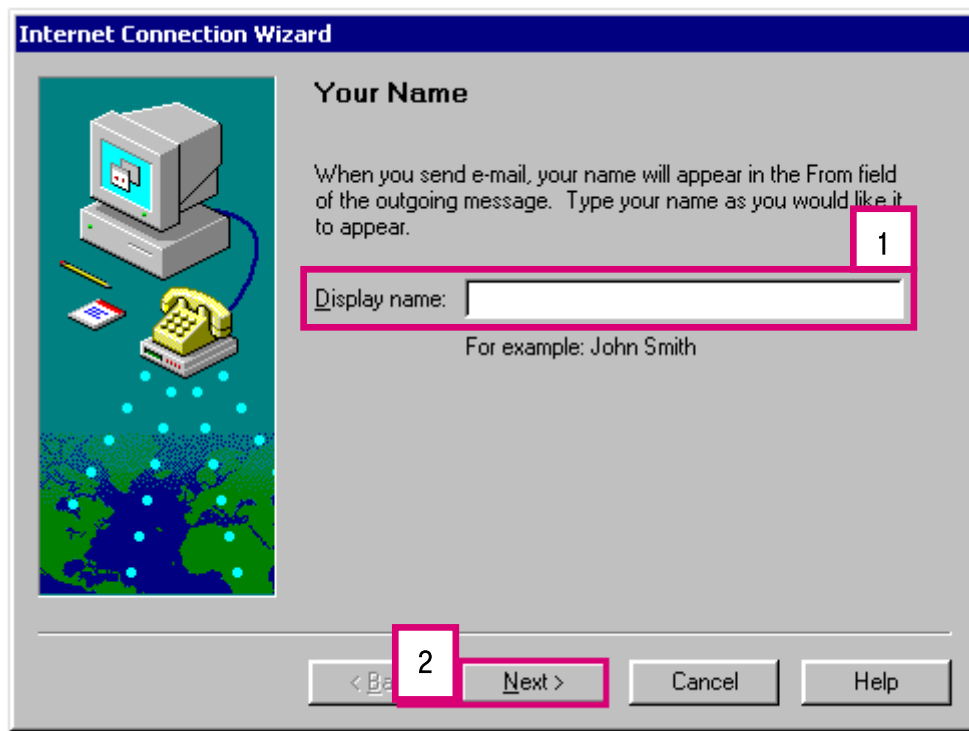
- Da biste kreirali novi mail account, pritisnite mišem na dijaloški okvir **Mail** (broj 1), a zatim na gumb **Add** (broj 2) i odaberite **Mail** (broj 3).





## Podešavanje postavki

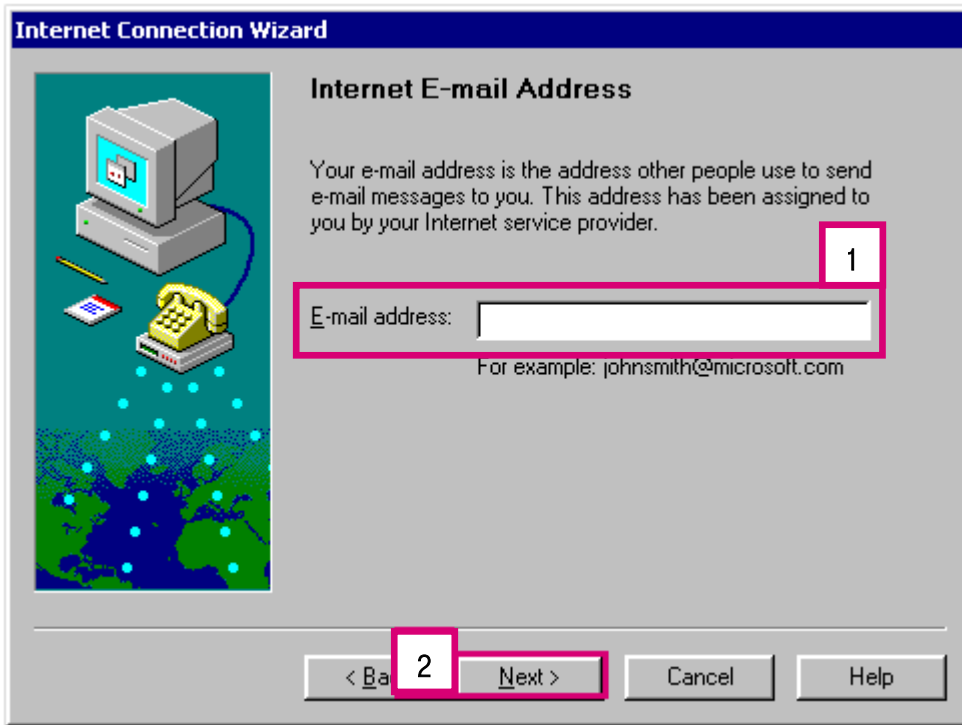
- Otvora Vam se dijaloški okvir **Internet Connection Wizard** te u **Display name** (broj 1) polju upisujete ime koje želite da se prikazuje primateljima Vaše poruke, zatim kliknete **Next** (broj 2).





## Podešavanje postavki

- Na ovom koraku unutar polja **E-mail address** (broj 1) upisujete svoju e-mail adresu, zatim kliknete **Next** (broj 2).





## Podešavanje postavki

- Unutar polja **My incoming mail server is a**, odaberete POP3.
- Pod **Incoming mail (POP3 or IMAP) server:** Upisujete pop.t-com.hr (broj 1).
- Pod **Outgoing Mail (SMTP) server:** Upisujete smtp.t-com.hr (broj 2), zatim kliknete **Next** (broj 3).

**Internet Connection Wizard**

**E-mail Server Names**

My incoming mail server is a **POP3** server. Type the name of your incoming mail server.

Incoming mail (POP3 or IMAP) server: **1**

An SMTP server is the server that is used for your outgoing e-mail. Type the name of your SMTP server.

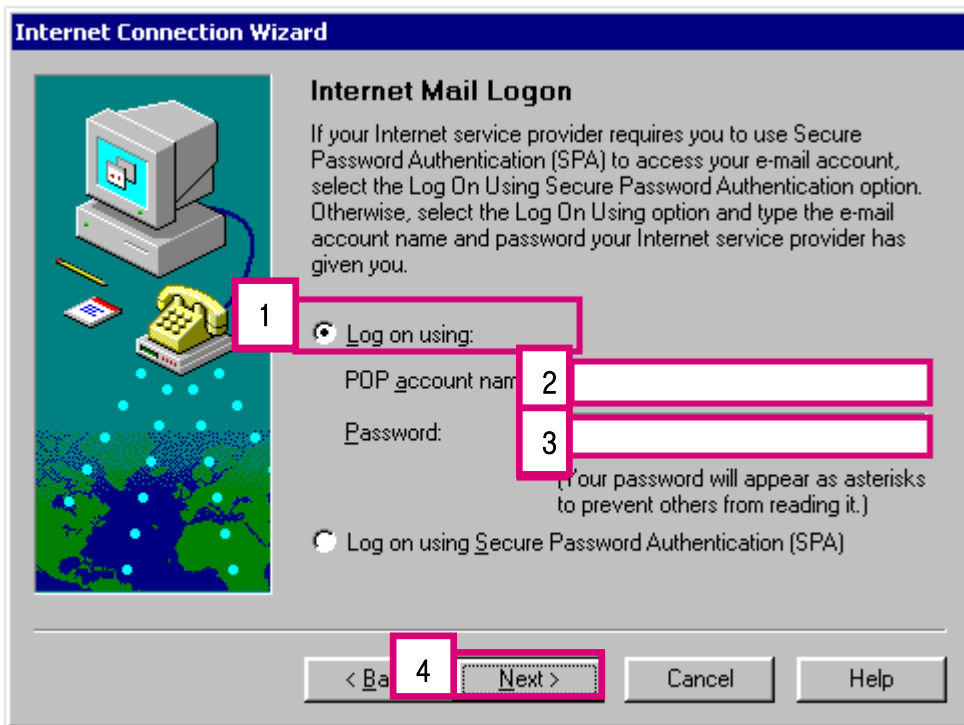
Outgoing mail (SMTP) server: **2**

< Back **3** Next > Cancel Help



## Podešavanje postavki

- Uključite opciju **Log on using** (broj 1).
- **POP Account Name** (User name): Upisujete korisničko ime (broj 2).
- **Password** (lozinka): Upisujete lozinku (broj 3) te kliknete **Next** (broj 4).



**Internet Connection Wizard**

**Internet Mail Logon**

If your Internet service provider requires you to use Secure Password Authentication (SPA) to access your e-mail account, select the Log On Using Secure Password Authentication option. Otherwise, select the Log On Using option and type the e-mail account name and password your Internet service provider has given you.

1  Log on using:

POP account name 2

Password: 3   
(Your password will appear as asterisks to prevent others from reading it.)

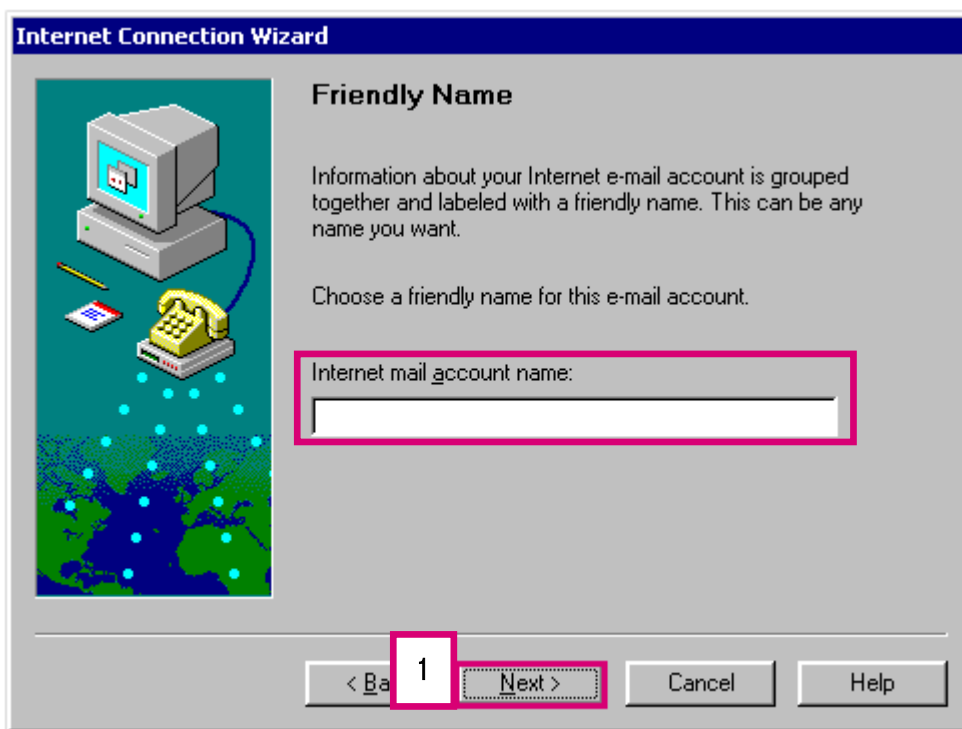
Log on using Secure Password Authentication (SPA)

4



## Podešavanje postavki

- **Internet mail account name** može biti bilo što, što izaberete. U svakom slučaju to neće vidjeti oni kojima šaljete ili oni od kojih primete elektroničku poštu.



- Nakon upisa kliknete **Next** (broj 1) i time ste uspješno dovršili kreiranje računa.